

Newsletter

May 2026

University of Glasgow | Issue No.83

Headlines in brief

- Introduction
- Site progress
- Look ahead
- Community update
- Environmental update
- Site working hours
- Who to contact



Introduction

Welcome to the latest edition of the University of Glasgow Campus Development newsletter.

This newsletter is issued by the University's appointed project delivery partner, Multiplex, for and on behalf of the Campus Development team. Each newsletter will provide an update from the project including the latest site works as well as a look ahead at planned activities.

The University of Glasgow is currently undertaking a £1.8 billion Campus Development Programme, which includes the redevelopment of the 14-acre former Western Infirmary site, building a mix of modern research, teaching and public spaces.

The new campus will create a rich mix of community, public engagement and social spaces and enhance engagement between the University and the city.

Constructing a better future



Site Progress

- Additional welfare cabins have been successfully installed on Plot C, increasing canteen and locker / drying room capacity.
- The remaining pre-cast columns along the St Mungo Square frontage have been installed.
- Level 3 slab has been fully completed following the final pour and core 5 continues to make good progress.
- Preparations have begun for early access fit-out works in the basement, including prop removal and remaining snagging.



Concrete pump being used in Zone 3

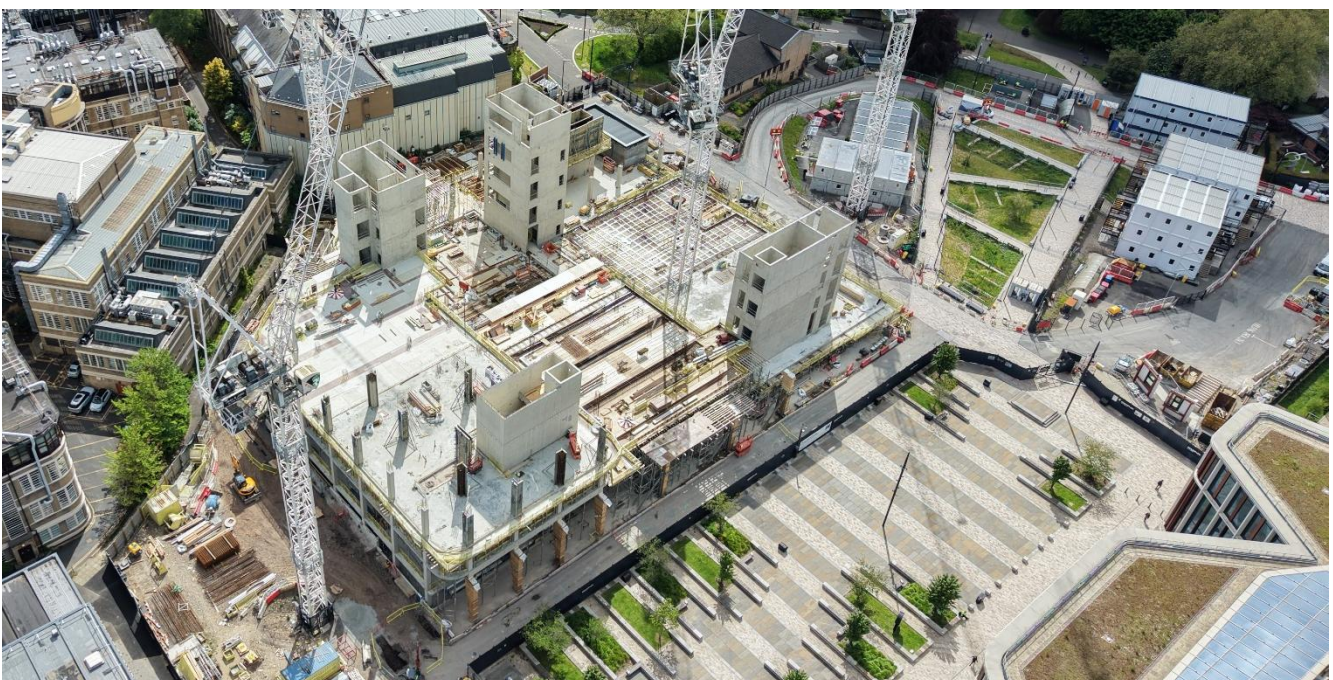
Look Ahead

- The first level 6 pour is scheduled for early June. There will also be a continuation of surface drainage works on the North & East elevations, with plans being developed to connect into St Mungo Square drainage.
- The first pre-fabricated MEP riser* will be installed in mid-June, this is a pre-fabricated system that incorporates several mech

*Prefabricated MEP (Mechanical, Electrical, and Public Health) risers are custom-built, factory-engineered vertical service modules. Designed for multi-story buildings, they combine piping, conduit, and ductwork into single, pre-assembled steel frames that dramatically accelerate on-site installation and improve worker safety.



Infrastructure works have commenced



Aerial view of the site

Social Value and Community Update

Over 40 members of the Campus Development team took part in this year's Lighthouse Club Charity Walk, clocking a combined total of half a million steps!

The Lighthouse Club is the only charity solely dedicated to supporting the emotional, physical, and financial wellbeing of construction workers and their families across the UK and Ireland. Their work provides vital support to those who keep our industry moving.

A huge well done to everyone who took part and contributed to such an important cause through their fundraising efforts.



The Campus Development team are excited to announce that the first of two Scotties at the University - as part of the **Scotties in the City** trail - will be located in St Mungo Square.

Meet the Grads

Introducing Multiplex's Graduates, who joined the team in September 2025. In this edition, we are getting to know **Josh Gallagher**.



What was your pathway into construction?

I had some work experience when I was 15 with a construction company – I knew then that I wanted to pursue a career in construction. I went on to study Quantity Surveying at Glasgow Caledonian, followed by 2 years travelling Oz as a construction labourer.

Biggest challenge / success so far?

Writing my dissertation and trying to gain access to construction professionals for interviews, with my dissertation examining different procurement routes for building design.

Favourite West End lunch spot?

Yayas (but I find it difficult for anything to beat my homemade chili!)

What do you like to do outside of work?

I enjoy going out after work on a Friday – I also go to the gym (mostly the sauna) and have started to get into running. I also enjoy watching the football.

What do you want to achieve on the Keystone project?

To develop a wealth of valuable experience and to be part of a successful team.

Constructing a better future

Key Contacts

community@multiplex.global



Callum Scott
Multiplex
ESG Lead
callum.scott@multiplex.global



Darren Pike
Multiplex
Project Director
darren.pike@multiplex.global

Site Working Hours

Our standard site working hours, agreed with local authority, are below:

8am – 7pm: Monday to Friday

8am – 1pm: Saturday

There is expected to be times where extended working hours are necessary and in such instances, advance approval is sought from Glasgow City Council.

REGISTERED
SITE

CONSIDERATE
CONSTRUCTORS

Considerate Constructors Scheme (CCS)

The site is registered with the Considerate Constructors Scheme.

The Scheme promotes high standards and accountability within the construction industry. It is a voluntary scheme, meaning that Scheme-registered contractors and organisations are actively trying to improve the way they work, by raising their standards in being more considerate to communities, the environment and their own workforce.

Use the QR code to submit your feedback:



SCAN ME