

MULTIPLEX



Newsletter

July 2025

University of Glasgow | Issue No.73

Headlines in brief

- Introduction
- Site progress
- Look ahead
- Community update
- Environmental update
- Site working hours
- Who to contact



Introduction

Welcome to the latest edition of the University of Glasgow Campus Development newsletter.

This newsletter is issued by the University's appointed project delivery partner, Multiplex, for and on behalf of the Campus Development team. Each newsletter will provide an update from the project including the latest site works as well as a look ahead at planned activities.

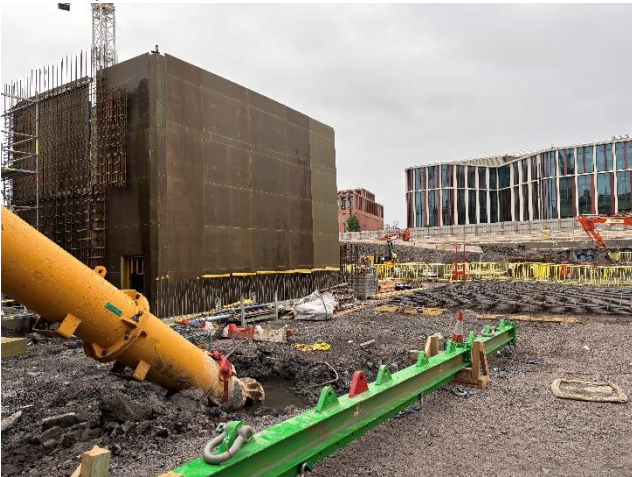
The University of Glasgow is currently undertaking a £1.8 billion Campus Development Programme, which includes the redevelopment of the 14-acre former Western Infirmary site, building a mix of modern research, teaching and public spaces.

The new campus will create a rich mix of community, public engagement and social spaces and enhance engagement between the University and the city.

Constructing a better future

Site Progress

- Following initial delays due to high winds, Tower Crane 1 (TC1) and TC2 have been successfully installed. The next and final tower crane will be installed in December. The three cranes completed over 250 lifts last week.
- A vacuum excavator was used to remove material around the high-voltage switchroom to facilitate the cropping of perimeter piles and formation of the capping beam. The piling was subject to a High-Risk-Review, which involves the workforce in the planning process to ensure the safest possible approach is taken.
- Following the installation of the props, the bulk excavation is now effectively complete - leaving only the removal of the access ramp, which will be completed at a later date.



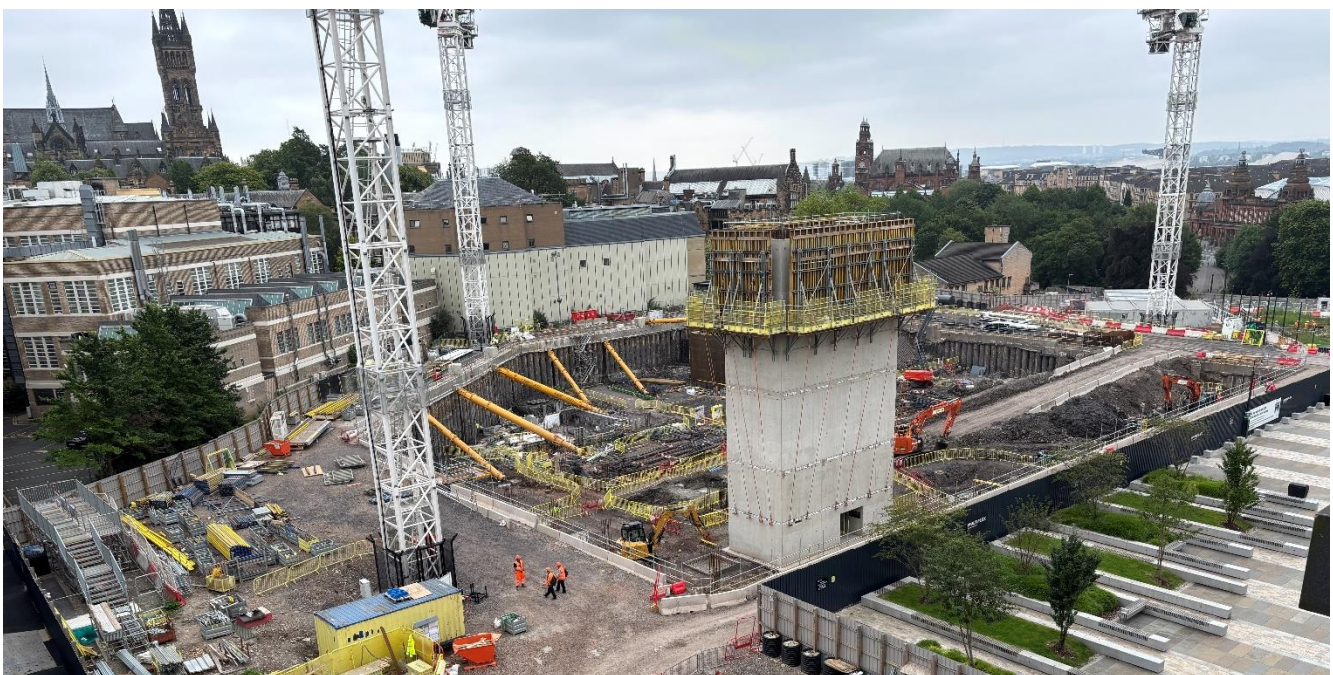
Core 3 base complete and wall shutters installed

Look Ahead

- The final lift of the shutters for the Core 1 walls will take the core to its full height.
- The team are targeting to have first pour for the base for Core 2 at the beginning of August, with the installation of reinforcement well underway.
- Drainage installation will continue to progress across zones 1-3 of the site. Directional drilling will tie in the Keystone Building's drainage system into the drainage infrastructure of the Western Campus.



Excavation around the HV switchroom



Aerial view of the site

Social Value and Community Update

- Following the premiere, we are delighted to launch the Campus Development Film 'People Make Projects'. The film showcases the work completed to date and some of the people behind the projects.



Use the link or scan the QR code to watch the film:

<https://www.multiplex.global/uk/news/people-make-projects-building-the-university-of-glasgow/>

Congratulations to the team on their recent awards success for the Keystone Building:

- The 'Green Architecture' Award 2025 by Good Design (**Winners**)
- The ICG Award from the American Institute of Architects (AIA) (**Winners**)
- The London Construction Awards – Best Sustainable Project (**Shortlisted**)

Environmental Update

- The Keystone Building is targeting BREEAM Excellent. BREEAM is an environmental assessment that can be applied to refurbishments and new builds both within the UK and internationally.
- According to the BRE (the governing body of BREEAM), the Excellent rating places the building within the top 10% of new non-domestic buildings for its sustainability performance – which contains several impressive environmental features, including:
 - Roof level glued laminated timber (glulam) beams will form the atrium rooflight and increase the amount of natural light
 - A blue-roof will provide both attenuation and biodiversity enhancement
 - The rainwater harvesting system will utilise collected rainwater for toilet flushing
 - Air-Source Heat Pumps (ASHPs) will provide heating/cooling, with the building also connecting to the district heating network

Key Contacts

community@multiplex.global



Callum Scott
Multiplex
ESG Lead
callum.scott@multiplex.global



Darren Pike
Multiplex
Project Director
darren.pike@multiplex.global

Site Working Hours

Our standard site working hours, agreed with local authority, are below:

8am – 7pm: Monday to Friday

8am – 1pm: Saturday

There is expected to be times where extended working hours are necessary and in such instances, advance approval is sought from Glasgow City Council.

REGISTERED
SITE

CONSIDERATE
CONSTRUCTORS

Considerate Constructors Scheme (CCS)

The site is registered with the Considerate Constructors Scheme.

The Scheme promotes high standards and accountability within the construction industry. It is a voluntary scheme, meaning that Scheme-registered contractors and organisations are actively trying to improve the way they work, by raising their standards in being more considerate to communities, the environment and their own workforce.

Use the QR code to submit your feedback:



SCAN ME