

# MULTIPLEX



# Newsletter

July 2024

University of Glasgow | Issue No.61

## Headlines in brief

- Introduction
- Site progress
- Look ahead
- Community update
- Environmental update
- Site working hours
- Who to contact



## Introduction

Welcome to the latest edition of the University of Glasgow Campus Development newsletter.

This newsletter is issued by the university's appointed project delivery partner, Multiplex, for and on behalf of the Campus Development team. Each newsletter will provide an update from the project including the latest site works as well as a look ahead at planned activities.

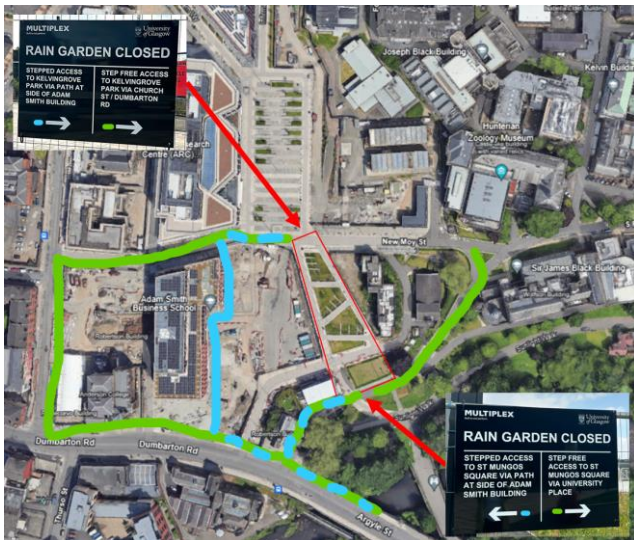
The University of Glasgow is currently undertaking a £1 billion Campus Development programme, which includes the redevelopment of the 14-acre former Western Infirmary site, building a mix of modern research, teaching and public spaces.

The new campus will create a rich mix of community, public engagement and social spaces and enhance engagement between the University and the city.

**Constructing a better future**

## Site Progress

- Enabling works continue for the plot of the Keystone project, opposite the Advanced Research Centre (ARC) building with all utility service cutbacks to the plot completed.
- Pedestrian and cycle diversions are in place following the closure of the Rain Gardens, which remain closed for the duration of the Keystone project. This is due to a significant increase in vehicular access required to service the project and to minimise the risk of vehicle / public interfaces during this period.
- The security cabin at the bottom of the Rain Gardens is now operational and will supplement access from St Mungo Square to the site compound.



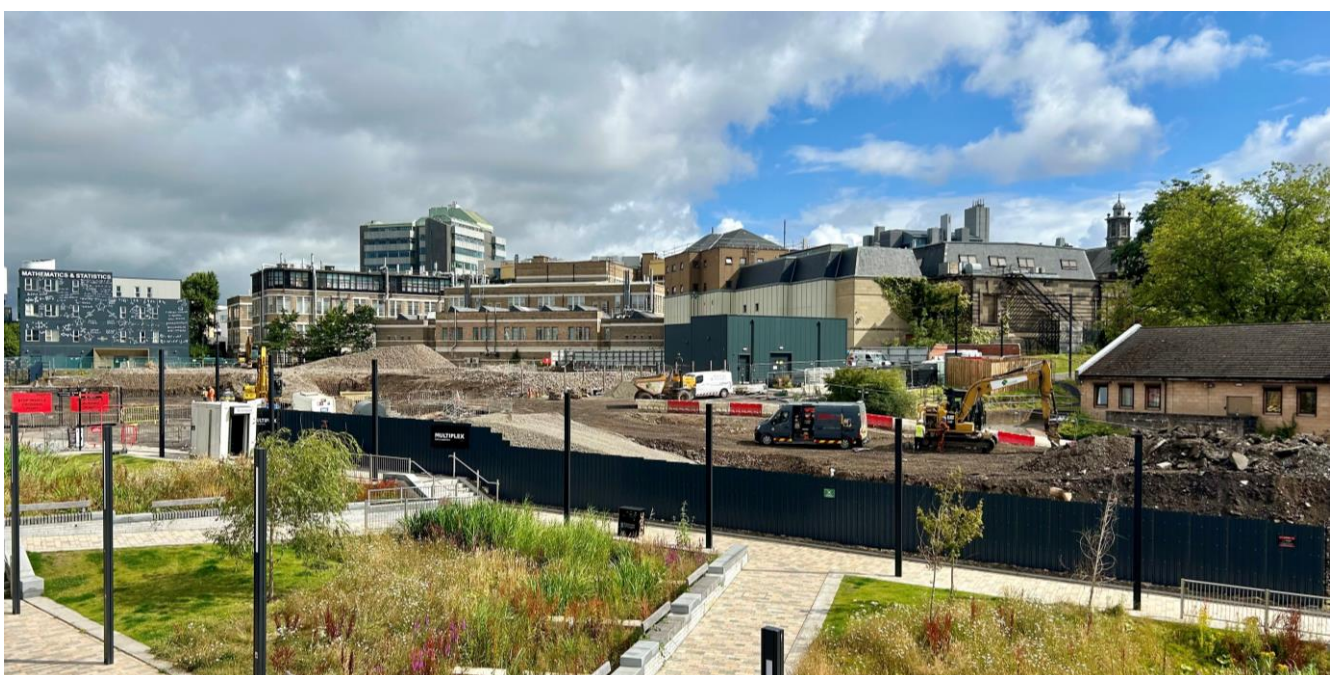
Diversions for Rain Garden closure

## Look Ahead

- The new haul road to the Keystone project will be completed to enable a one-way system to operate, with vehicle access and egress from Dumbarton Road.
- Hoarding will be installed on St Mungo Square to replace the current heras fencing.
- Installation and testing of the pile mat will continue to progress with completion at the end of September. The piling mat will provide a platform for the piling rigs to safely operate from.



Initial testing of the piling mat



View of the enabling works from the project office

## Social Value and Community Update

- Multiplex hosted two work placements throughout July, both of whom participated in the University of Glasgow's ConstructEd programme and are currently studying Civil Engineering with Architecture.
- The students gained exposure to a wide variety of topics from health & safety, commercial, design and operations and completed their week by providing a presentation to the project team on their experiences.
- Both students are currently being supported to obtain their CSCS competency card which can be used to access other sites throughout their studies.



- Of the several placements that the Campus Development team have supported throughout 2024, 100% of participants have agreed / strongly agreed that *"I feel more confident as a result of my placement"*, *"The placement will increase my employability opportunities"* and that *"I can imagine having a rewarding career within the construction industry."*
- The Campus Development team were delighted to be shortlisted for 'Community Engagement Project of the Year' at the Construction News Awards 2024 and have also been shortlisted at the London Construction Awards for 'Excellence in Community Engagement'.

## Key Contacts

[community@multiplex.global](mailto:community@multiplex.global)



### Callum Scott

Multiplex  
ESG Lead  
[callum.scott@multiplex.global](mailto:callum.scott@multiplex.global)



### Gillon Armstrong

Multiplex  
Project Director  
[gillon.armstrong@multiplex.global](mailto:gillon.armstrong@multiplex.global)



### Darren Pike

Multiplex  
Project Director  
[darren.pike@multiplex.global](mailto:darren.pike@multiplex.global)

## Site Working Hours

Our standard site working hours, agreed with local authority, are below:

**8am – 7pm: Monday to Friday**

**8am – 1pm: Saturday**

There is expected to be times where extended working hours are necessary and in such instances, advance approval is sought from Glasgow City Council.