

Newsletter

June 2026

University of Glasgow | Issue No.84

Headlines in brief

- Introduction
- Site progress
- Look ahead
- Community update
- Environmental update
- Site working hours
- Who to contact



Introduction

Welcome to the latest edition of the University of Glasgow Campus Development newsletter.

This newsletter is issued by the University's appointed project delivery partner, Multiplex, for and on behalf of the Campus Development team. Each newsletter will provide an update from the project including the latest site works as well as a look ahead at planned activities.

The University of Glasgow is currently undertaking a £1.8 billion Campus Development Programme, which includes the redevelopment of the 14-acre former Western Infirmary site, building a mix of modern research, teaching and public spaces.

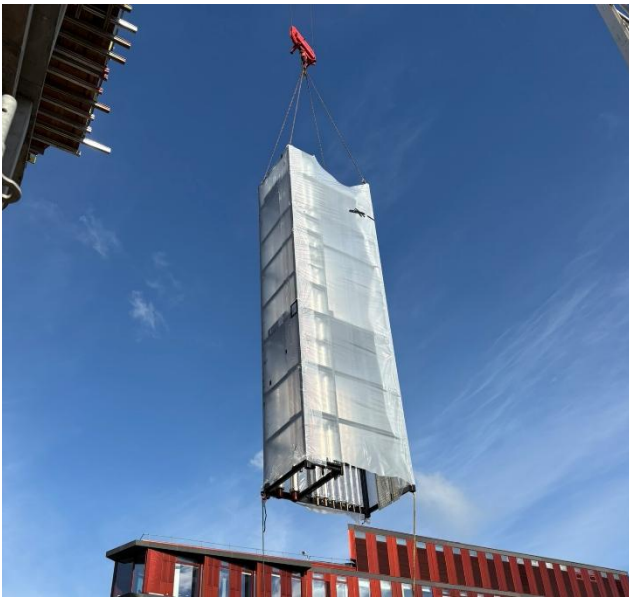
The new campus will create a rich mix of community, public engagement and social spaces and enhance engagement between the University and the city.

Constructing a better future



Site Progress

- The team successfully installed the first MEP riser module sections over 13 and 14 June. Due to their weight and size, this involved a complex lifting operation - with the longest section being 9.6 metres in length and weighing 3.9 tonnes. In total 6 sections were installed.
- Fit-out contractors have also started onsite, with Baxter & Gillespie installing dust sealer as well as Linear and Roskel who have started in Zone 1 (Level 1) and are delivering the drylining and ceiling packages respectively.



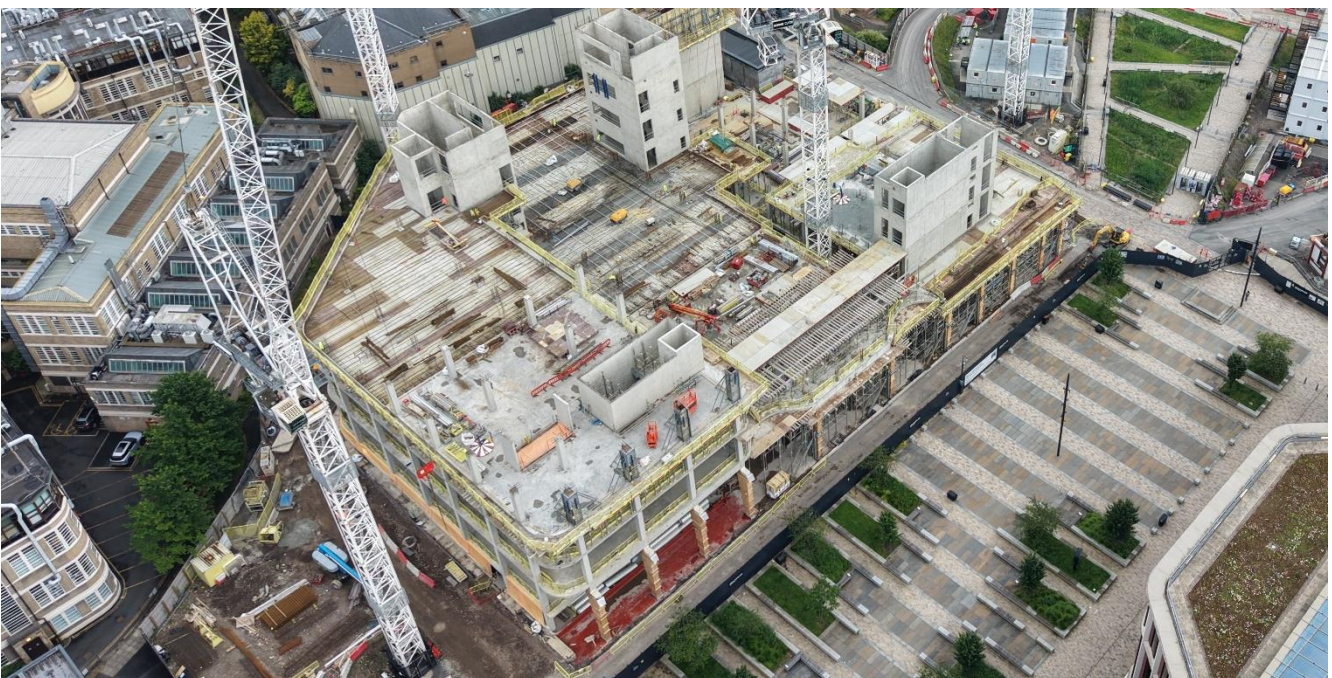
First MEP riser section being installed

Look Ahead

- The first slab on level 7 (the final level of concrete, with steel structure above) will be poured by mid-July, with core 5 (the final core to be completed) finished within the next week.
- Envelope works will commence by end of July, with Decomo beginning the installation of 556 pre-cast cladding panels – which are currently being manufactured in Belgium.
- The main MEP works will commence at the beginning of July with the installation of horizontal modules and the next batch of vertical riser modules arriving in August.



Basement with temporary waterproofing



Aerial view of the site

Social Value and Community Update

The [Scotties in the City](#) art trail is now live and we have two on campus! Have you spotted them yet?

40 giant Scottie Dog sculptures (and some mini ones) have been installed at various locations across the city, each one designed by a different artist, all in aid of the fantastic Maggie's.

'The Clockwork Orange' Scottie Dog, created by Laura Henderson and sponsored by Multiplex, is sitting in St Mungo Square, outside the University of Glasgow Advanced Research Centre.



And you can find the 'Dear Green Place' Scottie Dog, created by Adriana de Matos on the North Front of the Gilbert Scott Building.

Visit scottiesinthecity.co.uk/app to download the app and find them all (and look out for the rewards!)

Meet the Grads

Introducing Multiplex's Graduates, who joined the team in September 2025. In this edition, we are getting to know **Serena Iheagwaram**.



What was your pathway into construction?

I studied Engineering Science at school which gave me an insight to engineering as a potential career. I went on to study Mechanical Engineering at Strathclyde University, where I developed my interest in pursuing a career in construction.

Biggest challenge / success so far?

My biggest challenge has been starting in construction without a background in the sector. Equally, starting from scratch and learning on the job has been my biggest success to date!

Favourite West End food spot?

Taco Mazama (dinner recommendation) quesadilla with pulled pork, hot salsa and sprinkling of tortilla chips. Washed down with a lime-flavoured Jarritos.

What do you like to do outside of work?

Anything sport related – swimming, gym (I love a fitness class), if nice weather then skateboarding.

What do you want to achieve on the Keystone project?

Learning as much as possible and to be able to contribute to the success of the project.

Constructing a better future

Key Contacts

community@multiplex.global



Callum Scott
Multiplex
ESG Lead
callum.scott@multiplex.global



Darren Pike
Multiplex
Project Director
darren.pike@multiplex.global

Site Working Hours

Our standard site working hours, agreed with local authority, are below:

8am – 7pm: Monday to Friday

8am – 1pm: Saturday

There is expected to be times where extended working hours are necessary and in such instances, advance approval is sought from Glasgow City Council.

REGISTERED
SITE

CONSIDERATE
CONSTRUCTORS

Considerate Constructors Scheme (CCS)

The site is registered with the Considerate Constructors Scheme.

The Scheme promotes high standards and accountability within the construction industry. It is a voluntary scheme, meaning that Scheme-registered contractors and organisations are actively trying to improve the way they work, by raising their standards in being more considerate to communities, the environment and their own workforce.

Use the QR code to submit your feedback:



SCAN ME